

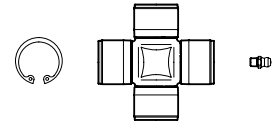
WARNING!

SECTIONS OF THE ASSEMBLY MARKED ARE NOT SHIELDED AND MUST BE SHIELDED BY AN INTERACTIVE GUARDING SYSTEM. BONDIOLI & PAVESI DECLINES RESPONSIBILITY IF PROPER GUARDS ARE NOT PROVIDED OR MAINTAINED.

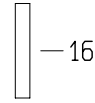
1	CODICE CODE	LATO TRATTORE TRACTOR SIDE	LATO MACCHINA IMPLEMENT SIDE	TIPO-TYPE	CLIENTE / CUSTOMER	RIF. CLIENTE / CUSTOMER REF.	
2	1R3 LB 2700 Nm			SFT-S6	3600522 SAMSON AGRO A/S	935000284	
3				DATA / DATE	DISEGNATO / DESIGNED BY	TIPO DI MACCHINA / TYPE OF IMPLEMENT	
4	 RILSAN L=1070	VELOCITA' MAX MAX SPEED	M max	19/5/05	P. Spennato	STUDIO / DESIGN	
		540 min ⁻¹	3000 Nm	LUNGHEZZA MAX IN LAVORO MAX WORKING LENGTH	Lw=	NOTE / NOTES	CODICE / CODE
				LUNGHEZZA MAX TEMPORANEA MAX TEMPORARY LENGTH	Lt=		REV.
				LUNGHEZZA MAX NON IN ROTAZIONE MAX LENGTH AT STANDSTILL	Ls=		CS6R121CE1R3IWSA



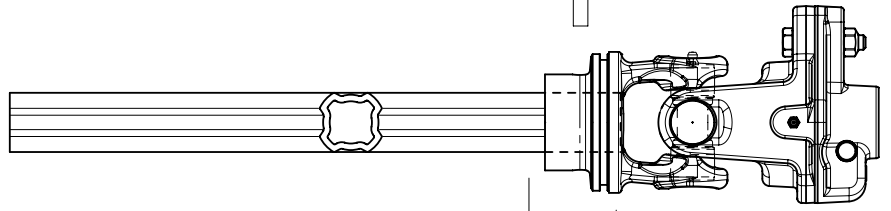
50



22



16

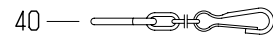


13

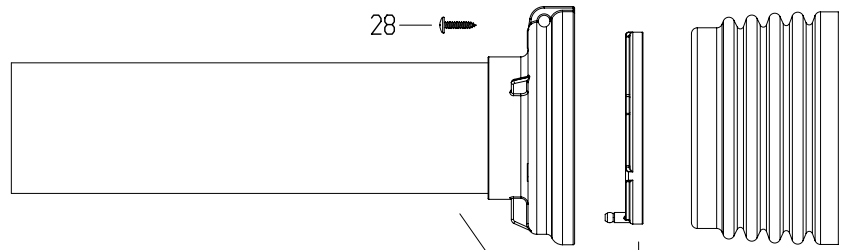
17

21

92



40



28

30

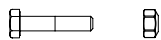
32

31

96

1

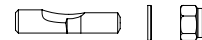
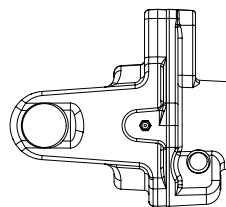
21



61



62



63

DISEGNATO / DESIGNED BY

P.Spennato

DATA / DATE

19/5/2005

CODICE / CODE

CS6R121CE1R3IWSA

REV.